

Wisconsin State House

January 20, 2010

Supply and Demand for Dental Services: Wisconsin 2010-2020



Tryfon Beazoglou, PhD

Howard Bailit, DMD, PhD

Veronica Myne, BA

Kathy Roth, DDS

This research was funded by Delta Dental of Wisconsin



Organization

- Study Objectives
- Methods
- Major Findings
 - Baseline
 - Trends
 - Access disparities
- Discussion



Definitions

Need Vs. Demand



Objectives

- Determine Current/Future Supply and Demand for Dental Services
- Estimate Surplus/Shortage DDS, RDH
- Examine Policy Options to Reduce Access Disparities



Methods: Data Sources

- Number Dentists
 - ADA master file
 - State of Wisconsin
 - Phone book/Websites
- Number Licensed Hygienists
 - State of Wisconsin
 - Practice survey



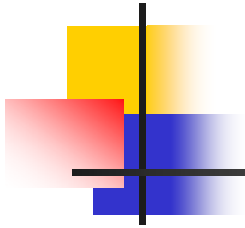
Methods: Data Sources

- Survey Practice/Clinic Characteristics
- Marquette Applicants, Students, Grads
- Population Demographics
- Dental Care Expenditures
- Utilization Rates
 - Medicaid claims
 - Delta Dental claims



Methods: Analyses

- Effective Demand
 - Population, dental expenses per capita
- Supply
 - Active dentists, new dentists, estimated retirees and productivity growth
- Care for Underserved – Safety Net and Private Practices



Baseline Workforce



Private System, 2009

Dentists*	
Mean Age (years)	52.0
Female (%)	16.6
Specialists (%)	17.1
Marquette Grads (%)	60.9
Dentists/Population	1/1,811
Active Practitioners	3,142
Dental Hygienists**	2,891
Dental Assistants**	2,465

*Total number including full and part-time

** Estimated from survey



Dental Schools

Dental School	Number	Percent
Marquette	1,916	60.9
Minnesota	360	11.4
Iowa	163	5.2
Illinois – Chicago	76	2.4
Northwestern	56	1.7
Loyola	57	1.7
S. Illinois	22	<1
Other	324	10.3
Missing	168	5.3



Specialists

Specialty	Number	Percentage
Orthodontics	159	29.4
Surgery	117	21.6
Pediatrics	79	14.6
Endodontics	63	11.6
Prosthetics	56	10.3
Periodontics	55	10.1
Pathology	3	<1
Radiology	1	<1
Public Health	7	<1
Unknown	185	-



Dentist Occupations

Occupation	Number	Percentage
Full-Time Practice *	2,343	74.7
Part-Time Practice	429	13.6
Faculty	104	3.3
Hospital	8	<1
Government	29	<1
Resident	14	<1
Armed Forces	14	<1
Other	32	1.0
Unknown	169	5.3

* >30 hours/week



Dentist Age, 2010

Age Group	Percentage
<30 years	2.9
30-39	16.1
40-49	17.0
50-59	35.9
60-69	22.9
>69	4.7



County Dental Workforce

Pop	N	DDS %	DDS Age	Female %	Spec. %	POP/ DDS
200K+	4	43.8	51.5	18.4	22.1	1497
100-200K	10	25.5	52.1	17.2	19.6	1810
50-100K	13	17.1	52.5	15.1	12.0	1833
25-50K	19	8.8	52.3	11.6	4.6	2622
<25K	26	4.8	51.2	11.8	5.1	2704



County Characteristics

Pop	N	Pop %	\$\$	Badger %	Rent Index	DMFS
200K+	4	36.6	\$57.1	9.7	1.4	43.7
100-200K	10	25.8	53.7	8.8	1.2	44.7
50-100K	13	17.5	53.2	8.6	1.1	45.2
25-50K	19	12.8	46.7	11.4	.9	46.7
<25K	26	7.3	41.6	15.3	.9	48.8



General Practice Survey, 2009

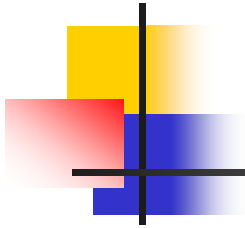
	Practice	Dentist
Dentists	1.82	-
Operatories	5.34	2.93
Office Space (SF)	2,866	1,592
Hygienists	2.64	1.46
Dental Assistants	2.25	1.24
Other Staff	2.49	1.38
Patient Visits	6,158	3,384
DDS/Hours/Year	2,493	1,385
Gross Billings	\$1,043,773	\$639,732
Net Income	\$422,875	\$259,181



Safety Net Clinics, 2009

FQHC Clinics*	15
FTE Dentists	53
Hygienists	38
Other Staff	107
Visits	140,058

*Wisconsin Primary Care Association Survey



Trends Future Workforce



Trends: 2000-2009

- Number Dentists
 - 2000 2,979
 - 2009 3,142
- Reasons for Difference
 - Growth Wisconsin GDP (5.4%/yr.)
 - More non-Wisconsin dentists
 - Fewer retirements
 - Marquette graduates



Trends: 2010-2020

Year	Population (000)	Dentists	Pop/DDS
2010	5,751	3,161	1,820
2012	5,822	3,199	1,821
2014	5,894	3,239	1,822
2016	5,966	3,278	1,822
2018	6,038	3,318	1,822
2020	6,110	3,358	1,823
Change	6.25%	6.23%	-



Growth DDS Productivity, Dental Demand, 2010 - 2020

	Annual Growth Rate
Dentist Productivity	2.61%
Per Capita Demand*	1.67%

*6.25% Expected growth per capita dental expenditures
4.58% Dental CPI



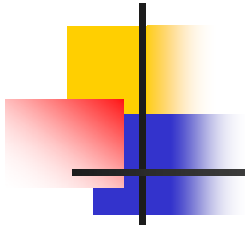
Number Hygienists, Dental Assistants, 2010-2020

	2010	2020
Hygienists	2,891	3,085
Assistants	2,465	2,630

Annual Production

RDH 172

DA 219



Access Disparities

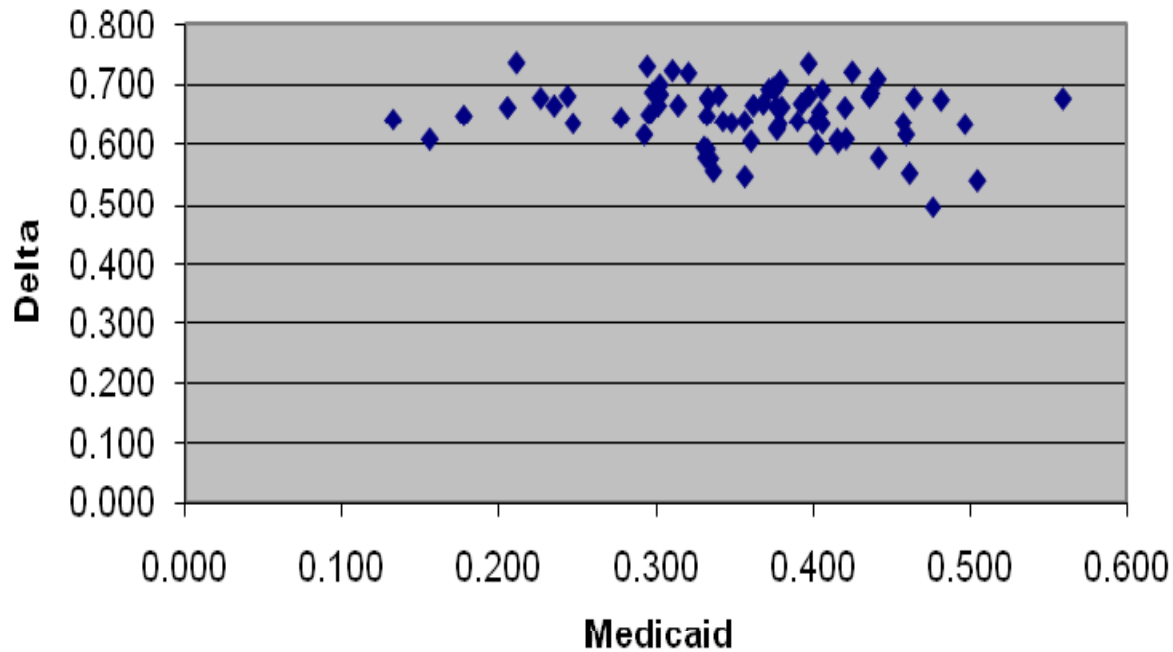


Access Problem

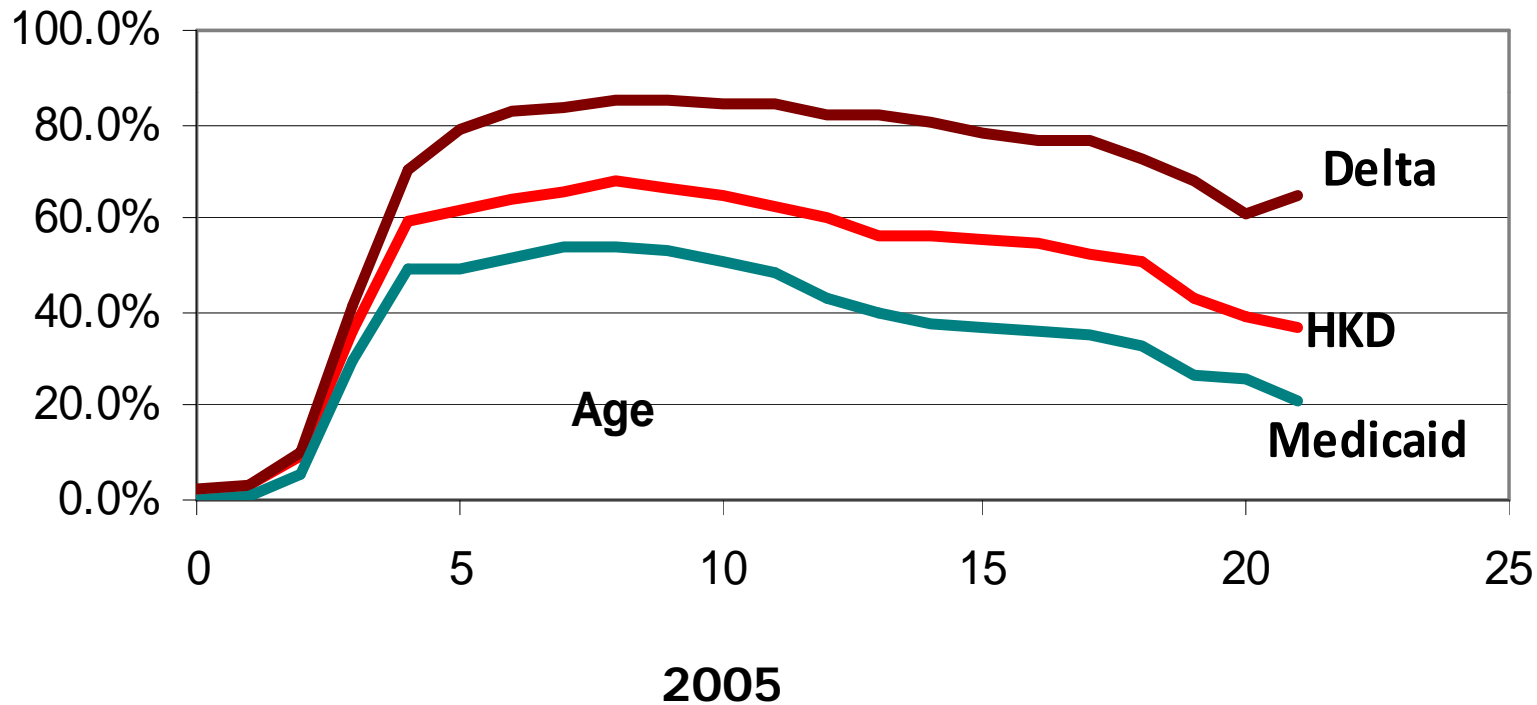
	Delta	Medicaid <12 Months	Medicaid 12 Months
Mean	66.4%	25.2%	40.5%
Max	78.9% Burnett	41.0% Price	68.2% Price
Min	44.4% Iron	14.1% Kewaunee	18.0% Milwaukee

Percentage of Children, Ages 0-21 Years, with an Annual Dental Visit by Insurance Coverage and County, 2008

Medicaid, Delta County Utilization Rates



HKD, Medicaid, Delta Utilization, 12 Month Enrollment





Comparison Medicaid and Delta Fees

- Medicaid/Delta Fees
 - Diagnostic Preventive 47.2%
 - Restorative 39.8%
- Private Practice
 - Expenses/Gross Billings = 59.6%



Disparities

Options



Reduce Disparities

- Increase Medicaid Fees
- Implement FQHC School Program
- Expand FQHC Dental Safety Net
- Increase Supply Dentists



Conclusions

- 2000–2009 Dentists Grew Faster than Population
- 2010–2020 Estimate Dentist Supply Grow Faster than Population Demand
- Disparities Primarily Financial Problem
- Many Options to Reduce Disparities